

COMPOSITE NO HARD WATER BYPASS VALVE INSTALLATION GUIDE

V3035 WS1.5P NO HARD WATER BYPASS

V3037 WS2 PLASTIC NHWBY ASSY

WARNING: USE ONLY SILICONE-BASED LUBRICANTS ON ALL CLACK CORPORATION COMPONENTS HYDROCARBONS WILL DAMAGE COMPONENTS THAT CONTAIN O-RINGS AND OR PLASTIC. THIS CAN CAUSE LEAKS OR BREAKAGE. DO NOT USE LUBRICANTS THAT CONTAIN HYDROCARBONS SUCH AS VASELINE®/ PETROLEUM JELLY, WD-40®, ETC. DO NOT USE CLACK CONTROL VALVE PRODUCTS ON WATER SUPPLIES THAT CONTAIN HYDROCARBONS, SUCH AS BENZENE, GASOLINE, KEROSENE, ETC.

OPERATING PRESSURES: 20 PSI - 125 PSI

OPERATING TEMPERATURES: 40°F - 110°F

PARTS INCLUDED:

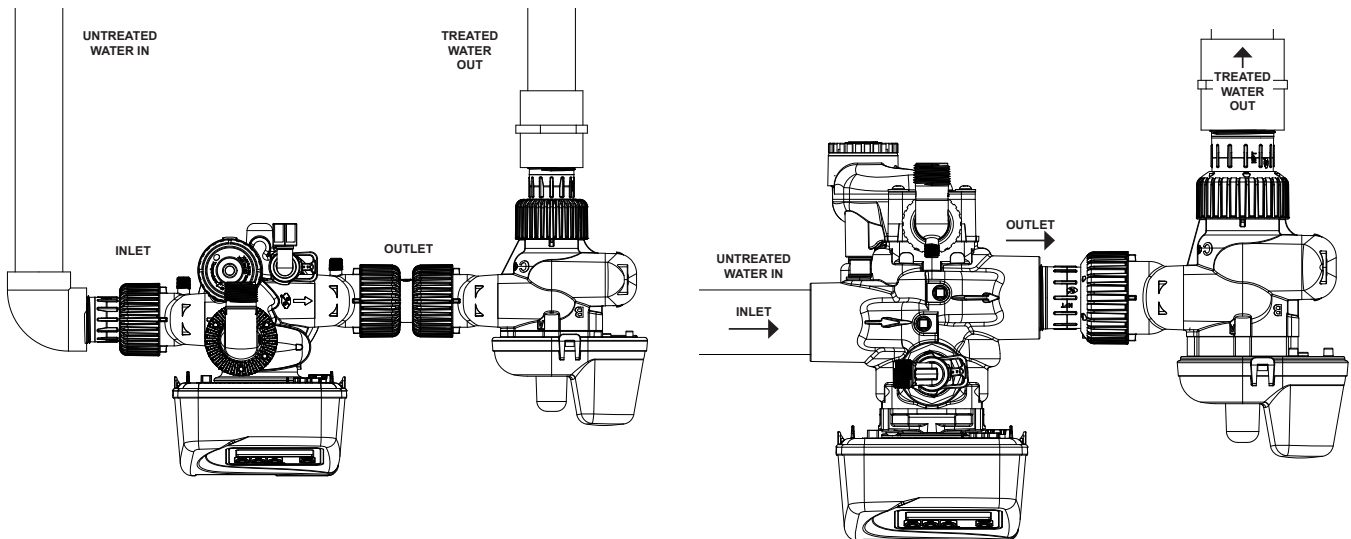
NBV • NO BYPASS VALVE

V3805 • STRAIN RELIEF COVER KIT

If the control valve manual does not include programming instructions for setting up Simple Twin Alternating (ALT A and ALT B), Separate Source (SEPS), or No Hard Water Bypass (NHBP), please contact your local equipment supplier for current instructions.

Cables: To bring in additional cables through the back plate, first locate the strain relief knockout on the inside of the back plate (lower-right side). Use a punch and hammer to remove the knockout. Remove one or both tabs in the strain relief on the back of the back plate with a needle nose pliers. Bring the additional cables through the knockout hole through the back plate and connect each cable to the proper location on the PCB. This will determine how much slacks needed in the cable before weaving into the strain relief. Once cables are weaved into the strain relief, use the V3805 strain relief cover kit (provided) and follow instructions for installation.

NBV—No Hard Water Bypass Valve: This will shut off water to the outlet during regeneration. Thread the NBV cable through the backplate and connect to the PCB two-pin connector labeled MAV or Bypass. Program the valve as NHBP. The NBV will close before the first regeneration cycle that is not FILL, SOFTENING, or FILTERING and open after the last regeneration cycle that is not FILL. If the control valve enters an error state during regeneration mode, the NBV will remain in its current state until the errors corrected and reset.



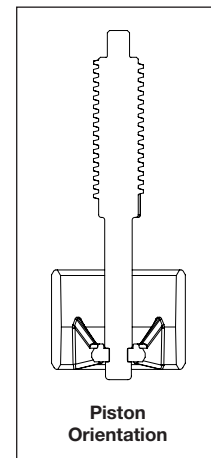
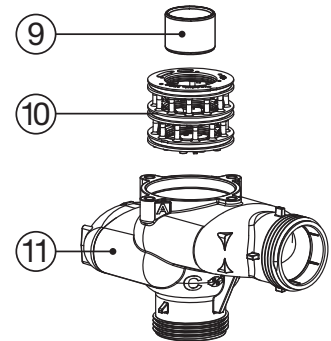
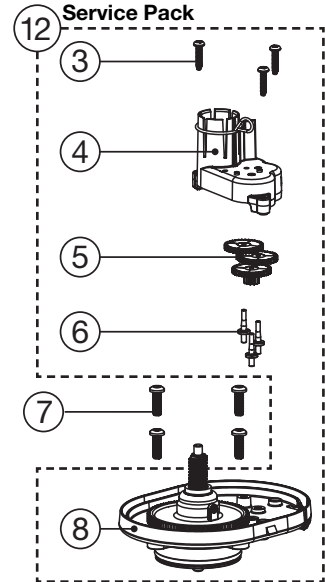
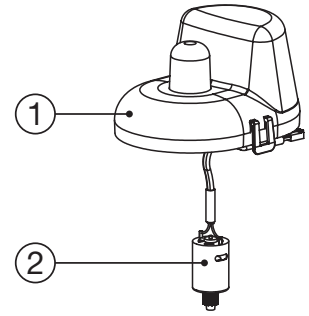
COMPOSITE NO HARD WATER BYPASS VALVE INSTALLATION GUIDE

1.5" NBV • V3035

Drawing No.	Order No.	Description	Qty.
1	V3073	MAV/NOHWBY COVER ASY	1
2	V3476	WS MOTOR ASY 8 FT	1
3	V3592	SCREW #8-3/4 PHPN T-25 SS	3
4	V3262-01	WS1.5&2ALT/2BY REDUCGEARCVRAS	1
5	V3110-01	WS1 DRIVE REDUCING GEAR PLAIN	3
6	V3264	WS2 BYPASS REDUCTION GEAR AXLE	3
7	V3527	SCREW 1/4-20 X 3/4 BHSCS SS	4
8	V3072	MAV/NOHWBY 1/125/15 DRIVE ASY	1
9	V3506-01	MAV/NOHRD 1/125/15 PISTON	1
10	V3074	MAV 1/125/15 STACK ASY	1
11	V4380	WS1.5P NHWBY BONDED BODY	1
12	V3042	WS1/1.25/1.5 MAV & NHWB SERVICE PACK	-
Not Shown	V3805	STRAIN RELIEF COVER KIT	1

2.0" NBV • V3037

Drawing No.	Order No.	Description	Qty.
1	V3073	MAV/NOHWBY COVER ASY	1
2	V3476	WS MOTOR ASY 8 FT	1
3	V3592	SCREW #8-3/4 PHPN T-25 SS	3
4	V3262-01	WS1.5&2ALT/2BY REDUCGEARCVRAS	1
5	V3110-01	WS1 DRIVE REDUCING GEAR PLAIN	3
6	V3264	WS2 BYPASS REDUCTION GEAR AXLE	3
7	V3642	SCREW 1/4-20 X 1 1/4 BHSCS SS	4
8	V3078	MAV/NOHWBY 2 DRIVE ASY	1
9	V3634-01	MAV/NOHWBY 2 PISTON	1
10	V3077	WS2 MAV STACK ASSEMBLY	1
11	V4479	WS2 PLASTIC NHWB BODY ASSY	1
12	V3043	WS2 MAV & NHWB SERVICE PACK	
Not Shown	V3805	STRAIN RELIEF COVER KIT	1



This product is Tested and Certified by NSF International against NSF/ANSI/CAN Standard 61 for material requirements and NSF/ANSI/CAN 372.